



Debris Handling Pumps



DHP3600: Item #26569
3690 gallon per hour pump

DHP4200: Item #26570
4235 gallon per hour pump

BEFORE YOU START:

Please visit www.tetrapond.com for more detailed installation instructions, time-saving tips, and inspirational ideas.

Before operating this pump for the first time, please read the safety warnings contained within this instruction guide.

IMPORTANT SAFETY INSTRUCTIONS

WARNING – To guard against injury, basic safety precautions should be observed, including the following:

1. **Read and follow all safety instructions.**
2. **DANGER**— To avoid possible electric shock, special care should be taken since water is employed in the use of this equipment.
3. Do not operate any appliance if it has a damaged cord or plug, or if it is malfunctioning, or if it is dropped or damaged in any manner.
4. Always unplug an appliance from an outlet when not in use, before putting on or taking off parts, and before cleaning. Grasp the plug and pull to disconnect; never yank the plug.
5. Do not allow the pump to become iced up.
6. Do not expose the pump to direct sunlight for a long period of time.
7. Make sure the pump is securely installed and stable before operating it.
8. **CAUTION**— This pump has been evaluated for fresh water only.
9. Do not use in salt water or highly chlorinated water.
10. These pumps must not be used in swimming pools or areas where people are in contact with the water.
11. Do not use an appliance for other than its intended use.
12. Read and observe all the important notices on the appliance.
13. Do not allow children to handle this equipment. This equipment should be kept away from children.

WARNING: Risk of electric shock— This plug is supplied with a grounding conductor and grounding type attachment plug. To reduce the risk of electric shock, be certain that it is connected to a grounding type receptacle.

WARNING: Risk of electric shock— This pump has not been investigated for use in swimming pools or marine areas.

SAFETY FIRST

Always disconnect the unit from the main electricity supply before carrying out any maintenance.

Always switch off the unit if there is no water running through it to prevent overheating and possible damage. Operate the pump only under water. Do not run the pump dry!

Always connect the pump to a GFCI circuit for specified outdoor use. Never submerge the pump when the impeller assembly is removed.

DO NOT RUN THE PUMP WITHOUT THE PRE-FILTER CAGE IN PLACE.

WARNING: DO NOT OPERATE THIS PUMP UNIT WITHOUT THE BALL NOZZLE IN PLACE

CAUTION: If the pump fails to operate, check the following:

- A. Check the GFCI and circuit breaker and try another outlet to ensure the pump is getting electrical power. Note: Always disconnect from electrical outlet before handling the pump.
- B. Check the pump discharge and tubing for kinks and obstructions. Algae build-up can be flushed out with a garden hose.
- C. Check the pre-filter "cage" for buildup of large debris such as leaves and plant material. Clean if necessary.
- D. If the pump still does not operate do the following:
 - Open the cage and check that the impeller spins freely.
 - Dismantle the pump clean the components outlined in the maintenance section of this instruction guide.
 - **DO NOT FORCE ROTATION OF THE IMPELLER – THIS MAY DAMAGE THE PUMP.**

Ground-Fault Circuit Interrupter Protection

To comply with the National Electrical Code (NFPA 70), and to provide additional protection from the risk of electric shock, this unit should only be connected to a receptacle that is protected by a ground-fault circuit interrupter (GFCI).

Extension Cords

Use only extension cords that are intended for outdoor use. These extension cords are identified by a marking "Acceptable for use with outdoor appliances; store indoors while not in use". Use only extension cords having an electrical rating not less than the rating of the product. Do not use damaged extension cords; examine extension cords carefully before use and replace if damaged. Do not abuse extension cord and do not yank on any cord to disconnect. Keep cord away from heat and sharp edges. Always disconnect extension cords carefully; disconnect them from the receptacle before disconnecting the product from the extension cord.

NEVER RUN THE PUMP UNLESS IT IS COMPLETELY SUBMERGED (UNDERWATER).

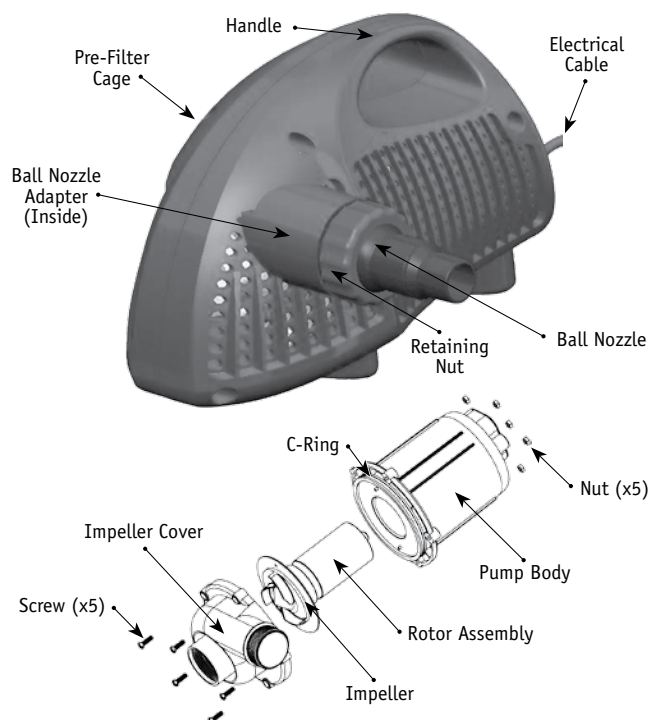
WARNING—THIS PUMP IS FITTED WITH A THERMAL CUT-OFF DEVICE THAT TEMPORARILY SWITCHES OFF THE PUMP IN THE EVENT OF OVERHEATING. THE PUMP MAY START AUTOMATICALLY AFTER THE PUMP COOLS DOWN.

SUBMERSIBLE PUMP

INTENDED FOR OUTDOOR OR INDOOR USE = CSA ENCLOSURE 3. FOR USE WITH MAXIMUM 86°F WATER. THIS PUMP HAS BEEN EVALUATED FOR USE WITH WATER ONLY.

SAVE THESE INSTRUCTIONS

TetraPond Debris Handling Pump Parts



How the TetraPond Debris Handling (DHP) Pump works

TetraPond DHP pumps are engineered to circulate large volumes of pond water without clogging. This allows the pump to operate for long periods of time without any maintenance.

Water, dirt and debris are drawn through the ¼ in. holes in the large pre-filter cage that surrounds the pump. The pre-filter cage prevents leaves, sticks and other large debris from entering the pump. It also protects the fish from the pump's impeller.

The open-face impeller allows debris up to ¼ in. in diameter to pass through the pump without clogging.

The pond water with dirt and debris are pumped to an external filter for removal or directly to a waterfall or stream.

Attaching tubing to the DHP Pump

In order to maximize this pump's performance, we recommend the use of tubing with an internal diameter (ID) of 1½ in. When using 1½ in. ID tubing, the narrow end of the ball nozzle should be cut-off to maximize flow from the pump (see Diagram 1).

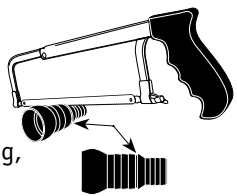


Diagram 1

1-1/4 in tubing can also be used. Attach to the narrow end of fitting. Secure tubing connections with hose clamps (not included).

Changing the Outlet Direction

(see Diagram 2)

1. Loosen the retaining nut by hand
2. Rotate the ball nozzle to the desired position
3. Tighten the retaining nut by hand

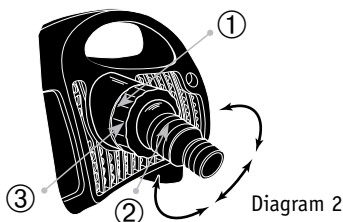


Diagram 2

WARRANTY CARD

Please fill out this card and mail it to the address below **OR** complete the **e-registration** form by logging on to www.tetrawarranty.com to validate your warranty. Thank you!

Name of Purchaser: _____

Address: _____

City _____ ST ____ Zip code: _____

E-mail Address: _____

Date of purchase: _____

TetraPond respects your privacy. Any and all personal information collected here will be kept strictly confidential and will not be sold, reused, rented, or otherwise disclosed.

Which product did you purchase?
DHP3600 _____ DHP4200 _____

Electronic Newsletter

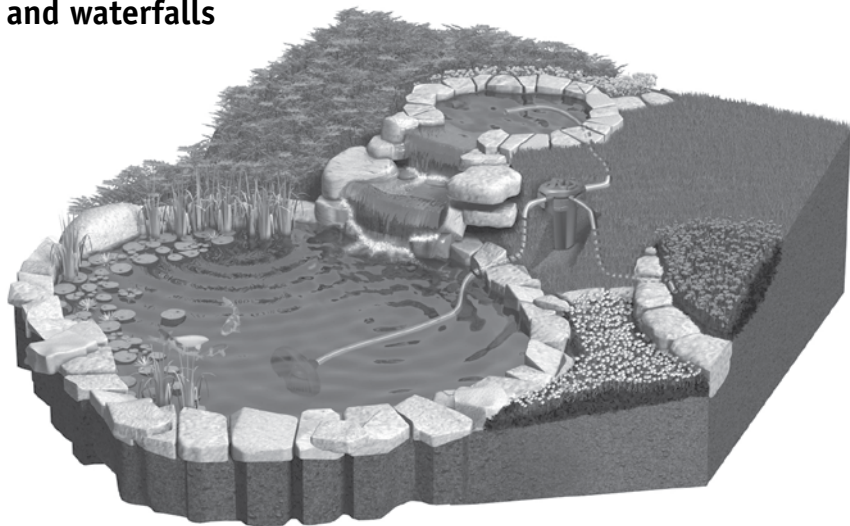
Yes, I would like to receive free e-mail updates on water gardening, including tips, new products, and or other helpful information.

No, I would not like to receive any e-mail updates at this time.



©2008 Tetra Holding (US) Inc.
3001 Commerce Street Blacksburg, VA 24060-6671
TetraPond® is a trademark
Consumer Support Service (800) 526-0650 • www.tetrapond.com

Using TetraPond Debris Handling Pump to power filters and waterfalls



Place pump at the bottom of the pond. Pump to an external filter.

Note: Be aware that filters reduce the flow to waterfalls and streams. Typically a reduction of 45% is expected in water flow through a pressure filter.

WARNING – THIS PUMP IS FITTED WITH A THERMAL CUT-OFF DEVICE THAT TEMPORARILY SWITCHES OFF THE PUMP IN THE EVENT OF OVERHEATING. THE PUMP MAY START AUTOMATICALLY AFTER THE PUMP COOLS DOWN.

NEVER RUN THE PUMP OUT OF WATER as this may cause irreparable damage to the pump!

Disassembly & Cleaning

There should be no reason to open the cage or pump, unless the pumping performance has diminished or stopped working and you have performed steps 1 & 2 in the maintenance & care section:

1. Turn off the power supply.
2. Move the pump to a dry location.
 - Loosen the bolts to open the cage and access the pump.
 - Remove the screws from the impeller cover.
 - Remove the impeller cover from the pump body by gently shaking the unit.
3. Pull the rotor assembly out of the pump body.
4. Carefully wash the parts with fresh water.
5. Carefully reassemble the rotor into the pump body after cleaning; make sure the 2 holes on the impeller base and the 2 dowels on the pump body fit together for proper assembly.
6. Turn the rotor by hand. The rotor should move freely. **DO NOT FORCE ROTOR.**
7. Be sure the rubber O-ring of the pump body is seated properly.
8. Replace the impeller cover on the pump body and tighten the stainless steel screws.
9. Submerge in water before operating. **Never run the pump dry!**

Questions? Problems? Missing Parts?

Before returning the product, please call our Customer Care Department at **800-526-0650**, Monday–Friday 7:30 a.m. to 5:30 p.m., Eastern USA Time or email us at **consumer@tetra-fish.com**.

Our Customer Care Department is here to provide assistance to help you solve your problem.



Warranty card
on reverse side.

Maintenance and Care

BEFORE CARRYING OUT ANY MAINTENANCE, THE PUMP MUST BE DISCONNECTED FROM THE MAIN ELECTRICITY SUPPLY.

When removing the pump from the pond, **DO NOT** lift it by the electrical cable as this may cause irreparable damage to the cable, which cannot be replaced. Use the handle to lift the pump from the pond.

A rope may be attached to the handle of the pump and to a float (not included), to allow the pump to be easily located and raised to the water surface.

The design features incorporated in the TetraPond DHP Pump minimize the amount of maintenance, however, if flow from the pump appears to decline, check the following:

1. The filter cage has become covered with a layer of debris. To clean cage, simply remove the pump from the pond and clean the debris which has collected around the outside the cage.
2. If the pump does not work, check the GFCI, circuit breaker and electricity supply.
3. The impeller has become jammed or blocked (see section on disassembly & cleaning).

Hard Water Problems

With the TetraPond DHP pump new design and technology it is uncommon to have any internal sediment problems, but in areas with **very** hard water, it may be necessary to remove lime deposits from the rotor assembly annually. Follow disassembly steps 1 through 4 and then soak the rotor assembly overnight in a de-scaler (such as white vinegar). After 12 hours of soaking, gently clean the rotor with a cloth and re-soak for an hour to remove any additional lime scale. Rinse thoroughly with water. Repeat if necessary. Then reassemble the pump.

Winter Care

As long as the unit does not become iced up, it can run throughout the winter. However, if there is a danger of icing-up, the unit should be removed from the pond.

If the pump is required to run throughout the winter, it is advisable to move it to shallower water (on a marginal plant shelf for example) to minimize disturbance to the fish resting in the warmer water which collects at the bottom of the pond during the colder weather.

WARRANTY

Tetra warranties the products listed below will be repaired or replaced free of charge for the specified number of years from the date of purchase if it fails to work because of defective material or workmanship.

Debris Handling Pump DHP3600/DHP4200 3 Years

This warranty is subject to the following terms:

1. Should it become necessary to return the product during the warranty period, send the product directly to Tetra, Consumer Services, 3001 Commerce Street, Blacksburg, Virginia 24060-6671.
2. Tetra's decision on all questions relating to alleged defects and repair shall be conclusive.
3. This warranty does not invalidate your statutory rights, but preserves your full benefits.
4. Repair parts or replacement product will be given on an exchange basis and will either be new, equivalent to new, or reconditioned. All customer returned parts or products that we replace become the property of Tetra.
5. The warranty does not cover normal wear and tear, nor any deterioration suffered through overloading, improper use, negligence or accident. Similarly, any modification made by the purchaser to the appliance will invalidate the warranty.
6. Except as set forth in this Warranty, Tetra expressly disclaims any and all liability for any loss or damage whatsoever sustained by the purchaser to the fullest extent permitted by applicable law.

